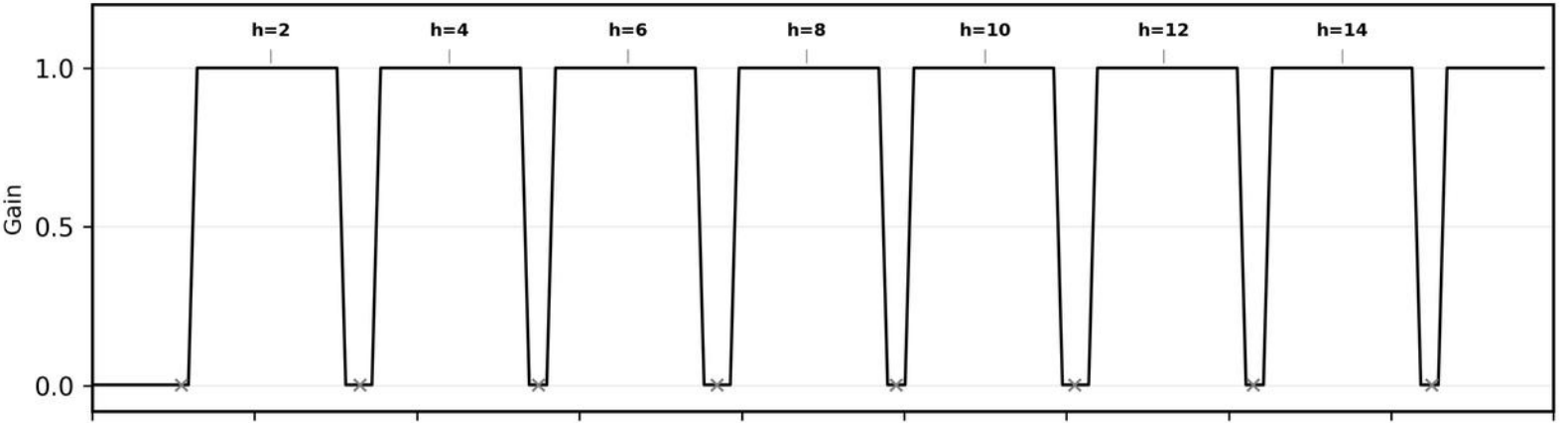
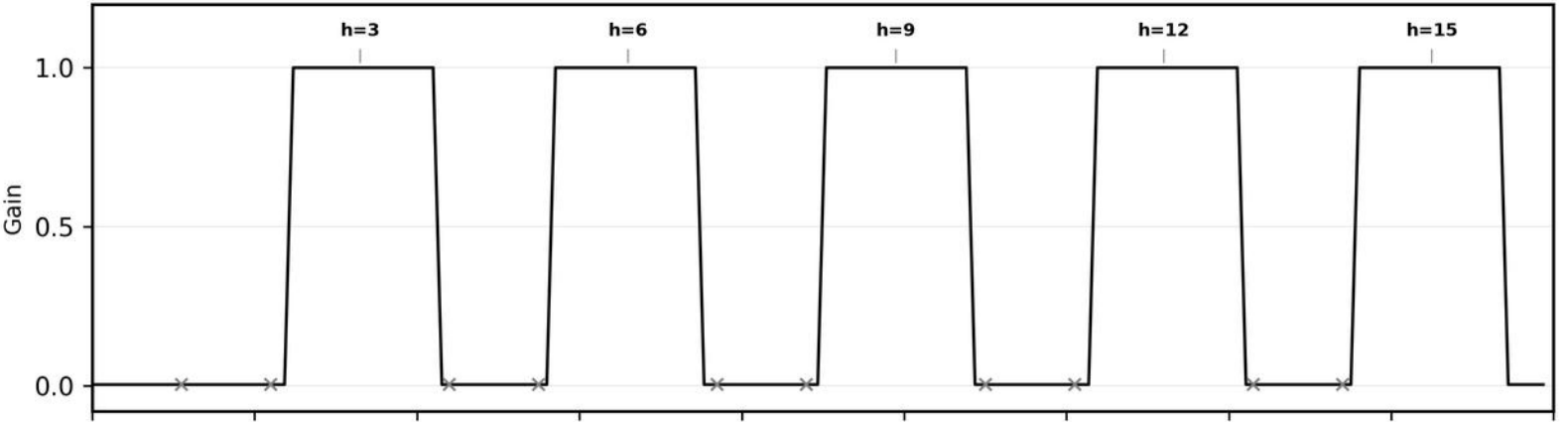


**FIG. 1 -- System Block Diagram**

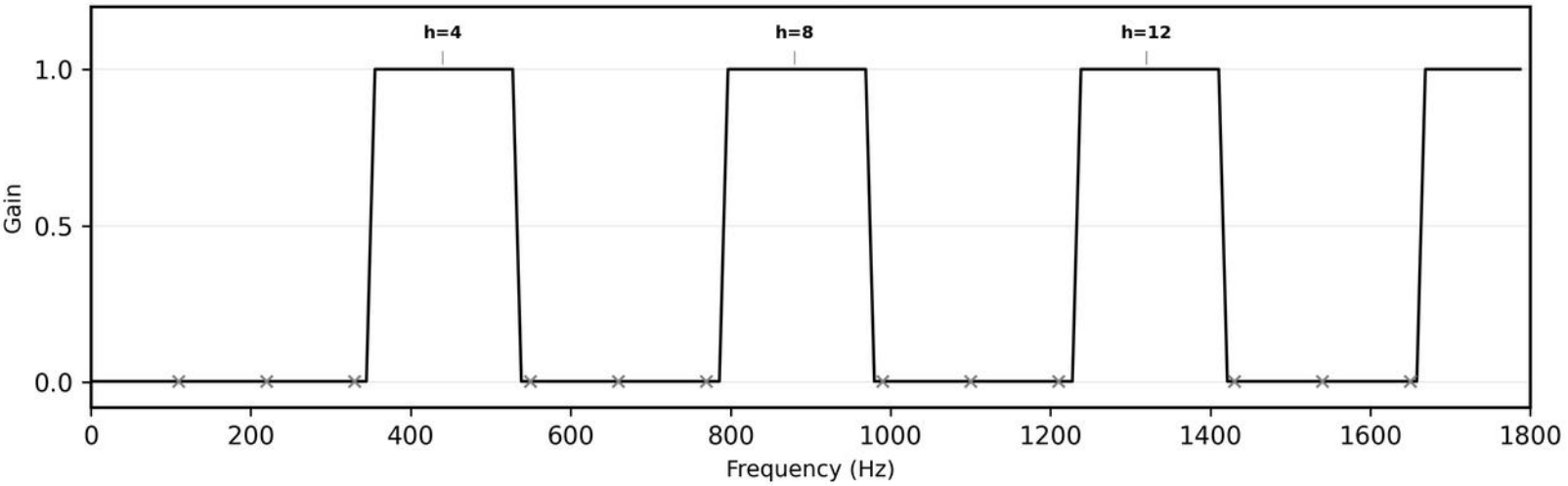
**(A) Node 2 (D=2): Even Harmonics Preserved**



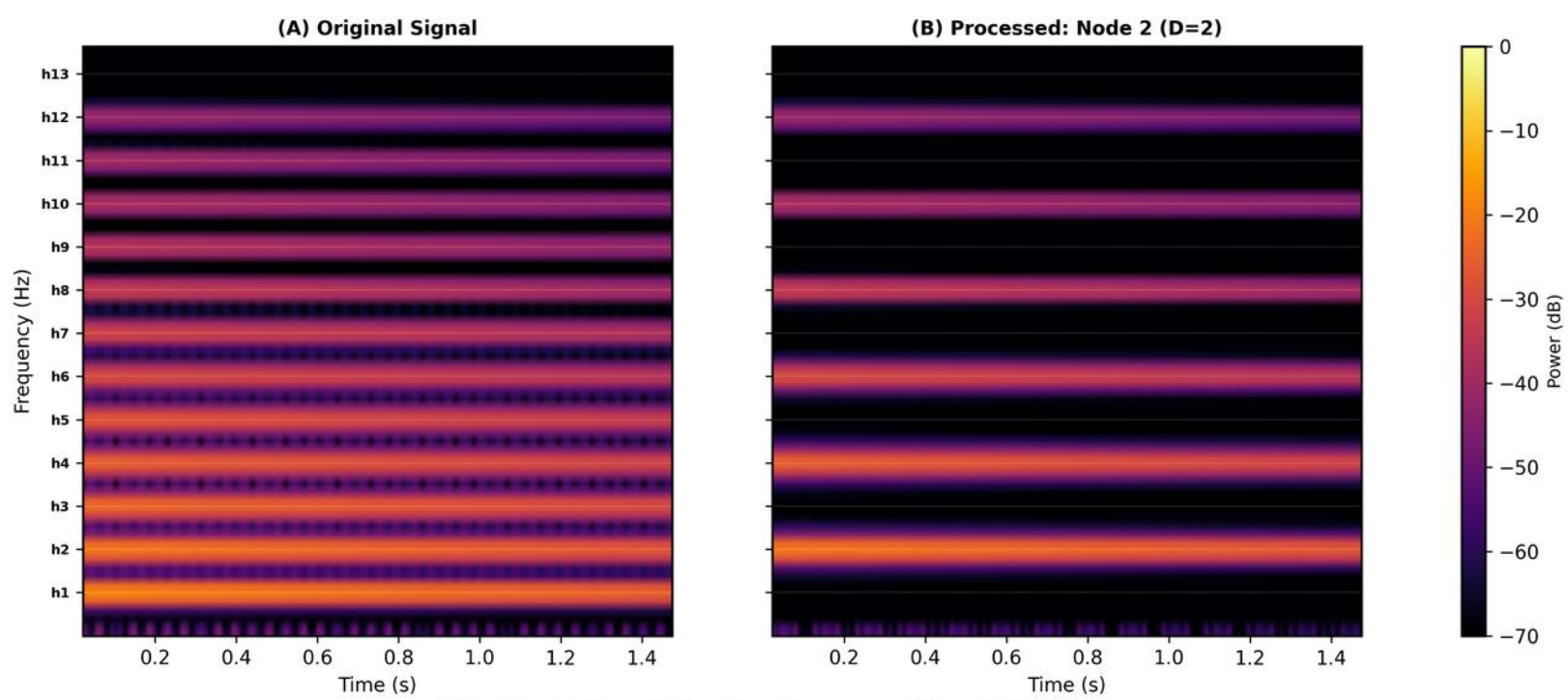
**(B) Node 3 (D=3): Multiples of 3 Preserved**



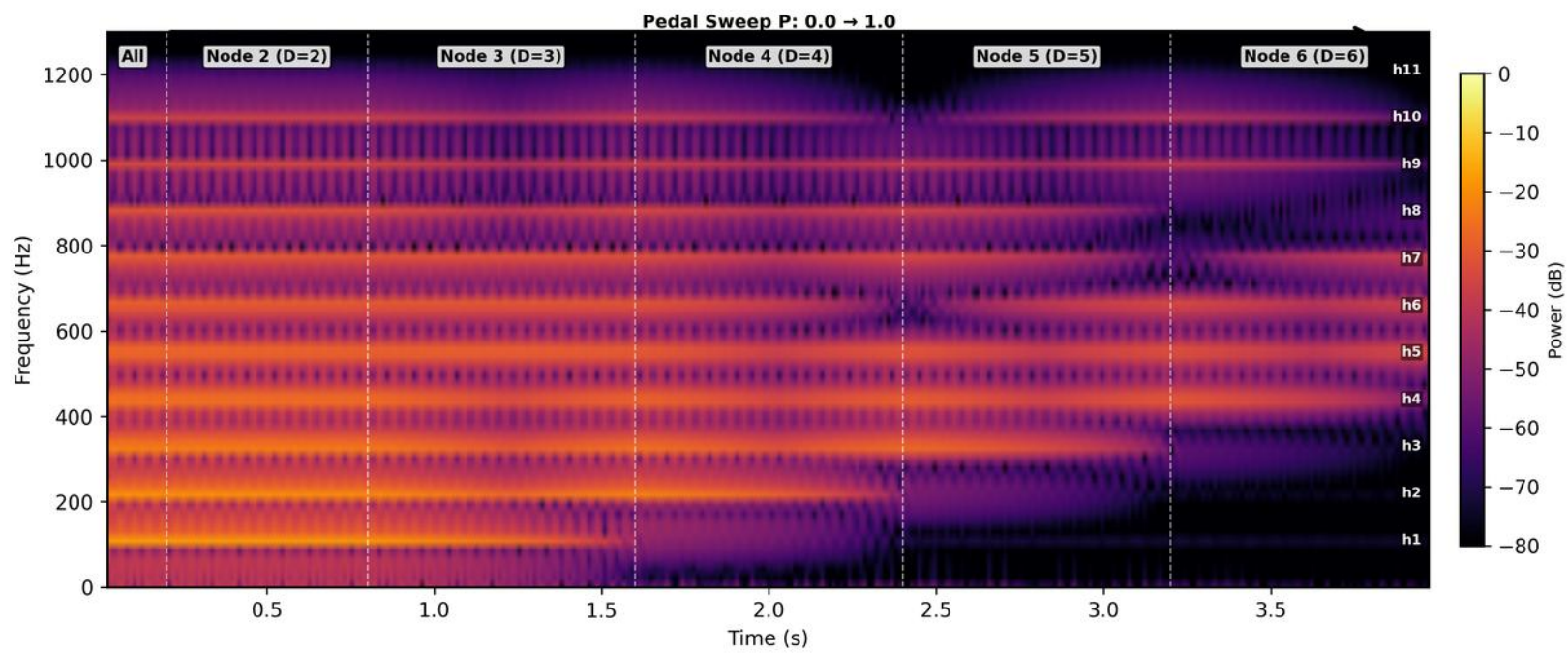
**(C) Node 4 (D=4): Multiples of 4 Preserved**



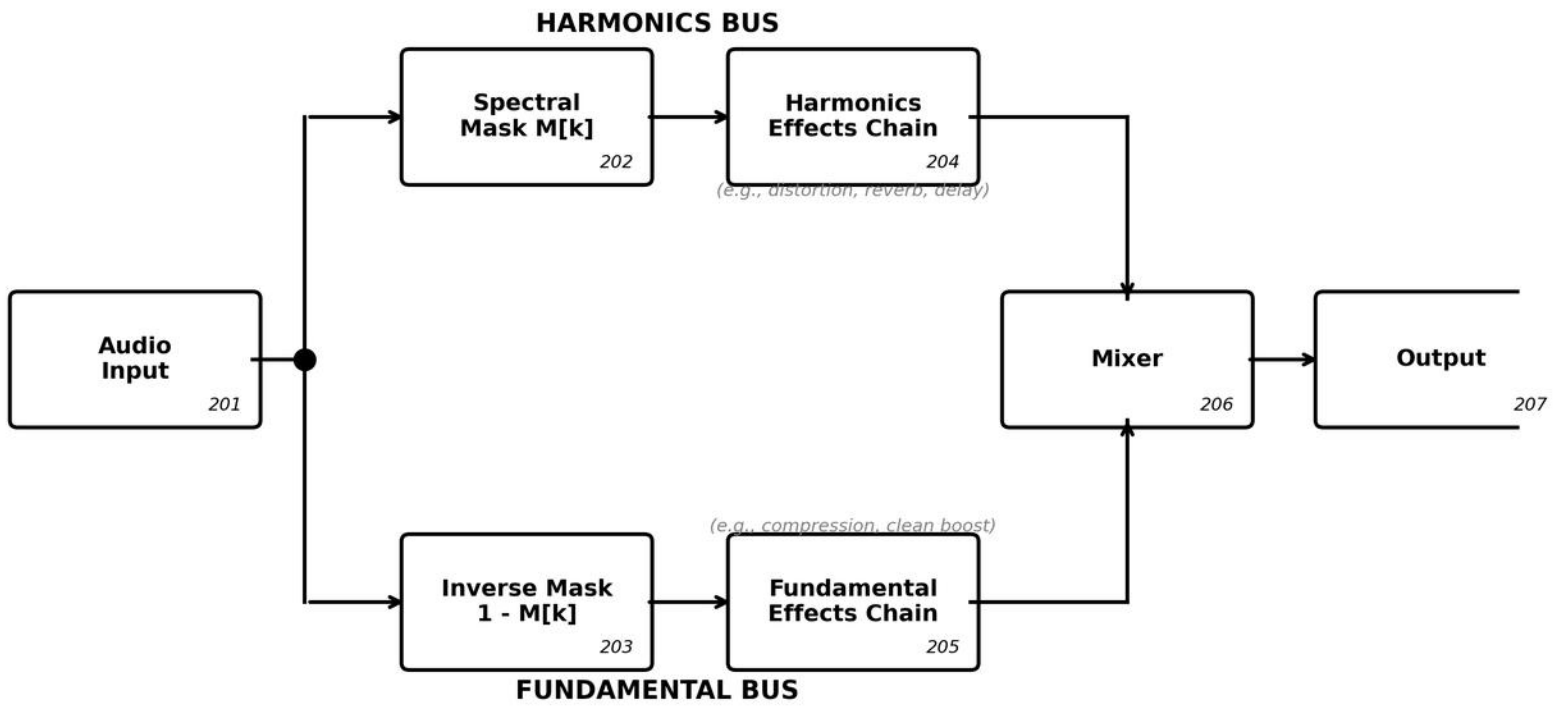
**FIG. 2 -- Spectral Mask Examples ( $f_0 = 110$  Hz)**



**FIG. 3 -- Before/After Spectrograms ( $f_0 = 110$  Hz)**

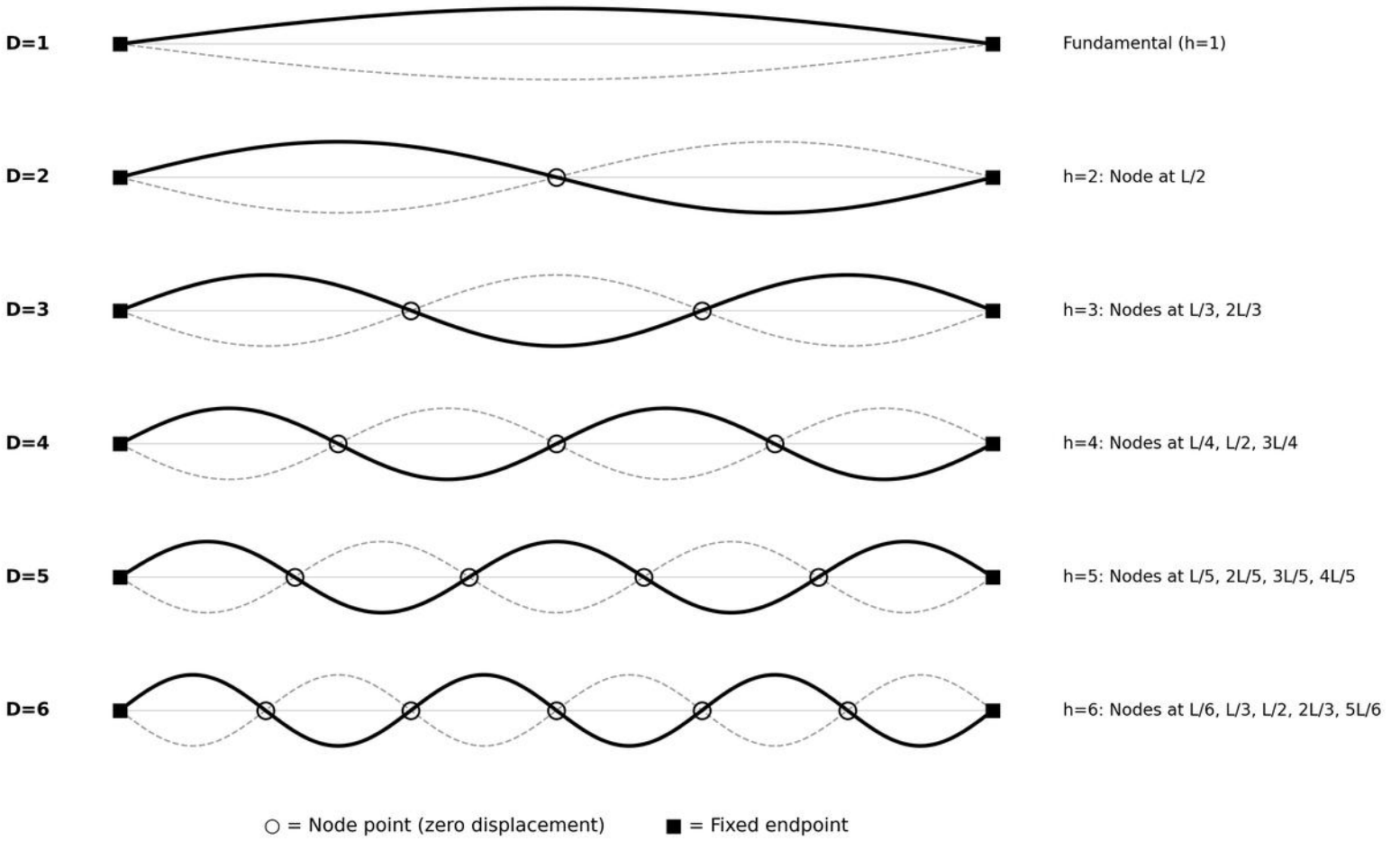


**FIG. 4 -- Expression Pedal Sweep Spectrogram**



**FIG. 5 -- Dual-Bus Architecture**

### Standing Wave Modes of a Vibrating String



**FIG. 6 -- Physical Basis for Harmonic Selection**